



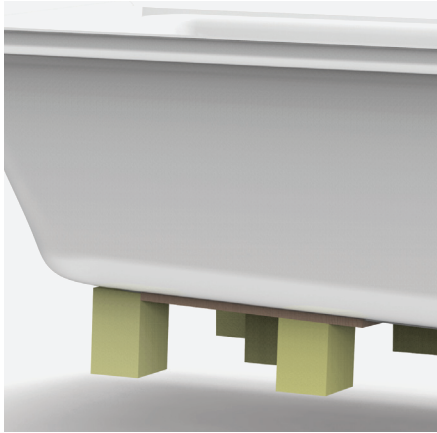
SIGNATURE[®] COLLECTION

Quality bath and shower solutions to meet any project need



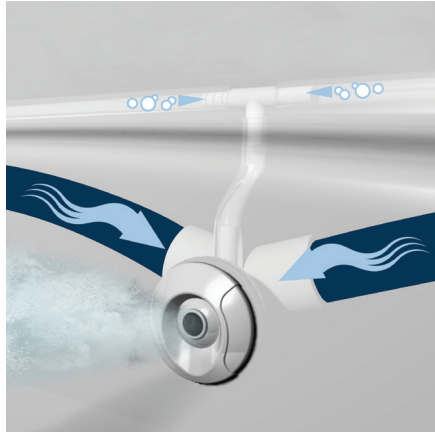
KEY FEATURES

Jacuzzi® baths and showers are built from strong and durable, high-gloss acrylic. They are reinforced with a proprietary fiberglass/resin formula that ensures a long lasting quality surface for years to come.



TRU-LEVEL® BASE

Simplify installation with a pre-leveled base available on all Jacuzzi® Signature® drop-in and alcove baths & shower bases.



CLEANLINE® SYSTEM

All Signature® whirlpools feature the exclusive Jacuzzi® CleanLine® system incorporating anti-microbial additives in the pipes and drain-down plumbing.



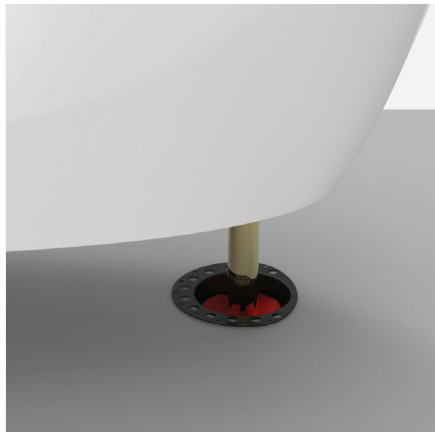
INTEGRATED TILE FLANGES

Integrated tile flanges are standard on all skirted baths and shower bases.



ADJUSTABLE LEVELING FEET

Signature® freestanding baths include adjustable stainless steel leveling feet for quick on-site adjustments.



DRAIN ALIGNMENT KIT

Optional MZ20000 can be purchased for improved access to plumbing and easier install on freestanding baths.

See pg 15 for guide



ABOVE FLOOR ROUGH

18" height skirted baths feature above floor rough compatibility for convenience.

See models J186030 & J186032



FREESTANDING BATHS

S

Soaking

Amalia shown with Water Rainbow® Flow Bathtub Filler



ADATTO
ADF6734

DIMENSIONS	67"L × 34"W × 24"H
DRAIN LOCATION	Center
BATHING DEPTH	17.9"
MAX GALLONS	90
DECK MOUNT	YES



AMALIA
AMF6734

DIMENSIONS	67"L × 34"W × 24"H
DRAIN LOCATION	Center
BATHING DEPTH	17.6"
MAX GALLONS	80
DECK MOUNT	YES



SIGNATURE® OVAL
OSF5930 | OSF6732

DIMENSIONS	59"L × 30"W × 23.6"H 67"L × 32"W × 23.6"H
DRAIN LOCATION	Universal End
BATHING DEPTH	15.7"
MAX GALLONS	67 (59") 83 (67")
DECK MOUNT	NO



SKIRTED BATHS

S

Soaking

WP

Whirlpool



6030 19" RECTANGLE SKIRTED

JIS6030

DIMENSIONS	60"L × 30"W × 19"H
DRAIN LOCATION	Left or Right End
BATHING DEPTH	14"
OPERATING GALLONS	53



6030 18" AFR RECTANGLE SKIRTED

J186030

DIMENSIONS	60"L × 30"W × 18"H
DRAIN LOCATION	Left or Right End
BATHING DEPTH	11"
OPERATING GALLONS	43



6030 17" LOW-PROFILE RECTANGLE SKIRTED

J1L6030

DIMENSIONS	60"L × 30"W × 17"H
DRAIN LOCATION	Left or Right End
BATHING DEPTH	11"
OPERATING GALLONS	43

Note: Also available with 16" deck height, order J166030



SKIRTED BATHS

S

Soaking

WP

Whirlpool



6032 19" RECTANGLE SKIRTED

J1S6032

DIMENSIONS	60"L × 32"W × 19"H
DRAIN LOCATION	Left or Right End
BATHING DEPTH	14"
OPERATING GALLONS	53



6032 18" AFR RECTANGLE SKIRTED

J186032

DIMENSIONS	60"L × 32"W × 18"H
DRAIN LOCATION	Left or Right End
BATHING DEPTH	11"
OPERATING GALLONS	43



6032 17" LOW-PROFILE RECTANGLE SKIRTED

J1L6032

DIMENSIONS	60"L × 32"W × 17"H
DRAIN LOCATION	Left or Right End
BATHING DEPTH	11"
OPERATING GALLONS	43

Note: Also available with 16" deck height, order J166032



SKIRTED BATHS

S

Soaking

WP

Whirlpool



6036 19" RECTANGLE SKIRTED

J1S6036

DIMENSIONS	60"L × 36"W × 19"H
DRAIN LOCATION	Left or Right End
BATHING DEPTH	14"
OPERATING GALLONS	62



6042 OVAL IN RECTANGLE SKIRTED

J4S6042

DIMENSIONS	60"L × 42"W × 19"H
DRAIN LOCATION	Left or Right End
BATHING DEPTH	12.75"
OPERATING GALLONS	56



7236 RECTANGLE SKIRTED WITH ARMRESTS

J1A7236

DIMENSIONS	72"L × 36"W × 19.75"H
DRAIN LOCATION	Left or Right End
BATHING DEPTH	15"
OPERATING GALLONS	78



DROP-IN BATHS

S

Soaking

WP

Whirlpool



6042 OVAL DROP-IN

J3D6042

DIMENSIONS	59"L x 41"W x 21"H
DRAIN LOCATION	Left or Right End
BATHING DEPTH	15.5"
OPERATING GALLONS	66



6042 OVAL IN RECTANGLE DROP-IN

J4D6042

DIMENSIONS	60"L x 42"W x 21"H
DRAIN LOCATION	Left or Right End
BATHING DEPTH	15"
OPERATING GALLONS	66

Note: Also available with integrated tile flanges, order J4T6042
4 optional pump locations available



6638 OVAL DROP-IN

J3D6638

DIMENSIONS	66"L x 38"W x 19.5"H
DRAIN LOCATION	Left or Right End
BATHING DEPTH	15.25"
OPERATING GALLONS	56



DROP-IN BATHS



Soaking



Whirlpool



7242 OVAL DROP-IN
J3D7242

DIMENSIONS	71"L × 41"W × 21"H
DRAIN LOCATION	Left or Right End
BATHING DEPTH	15"
OPERATING GALLONS	78



7242 OVAL IN RECTANGLE DROP-IN
J4D7242

DIMENSIONS	72"L × 42"W × 21"H
DRAIN LOCATION	Left or Right End
BATHING DEPTH	15"
OPERATING GALLONS	78

Note: Also available with integrated tile flanges, order J4T7242
4 optional pump locations available



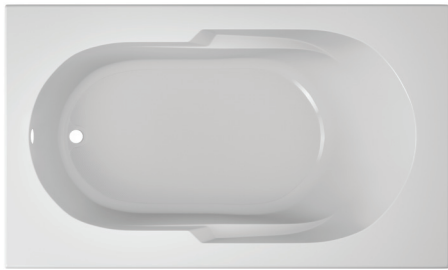
DROP-IN BATHS

S

Soaking

WP

Whirlpool

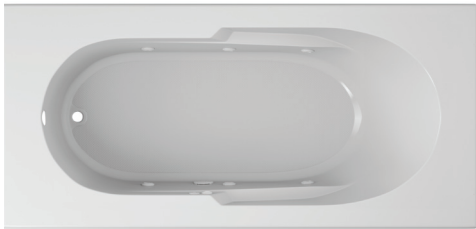


6036 RECTANGLE DROP-IN

J2D6036

DIMENSIONS	60"L × 36"W × 19.25"H
DRAIN LOCATION	Left or Right End
BATHING DEPTH	13.8"
OPERATING GALLONS	54

Note: Also available with integrated tile flanges, order J2T6036



7236 RECTANGLE DROP-IN

J2D7236

DIMENSIONS	72"L × 36"W × 19.25"H
DRAIN LOCATION	Left or Right End
BATHING DEPTH	13.8"
OPERATING GALLONS	58

Note: Also available with integrated tile flanges, order J2T7236



6060 CORNER DROP-IN

J5D6060

DIMENSIONS	60"L × 60"W × 22"H
DRAIN LOCATION	Center
BATHING DEPTH	15"
OPERATING GALLONS	86

Note: Also available with integrated tile flanges, order J5T6060



**SHOWER BASES
CENTER DRAIN**

Shown with MB28827 Drain with Chrome Strainer



2" THRESHOLD CATALINA® BASES

Compatible with MB28827 Drain & MM23959 Drain Cap (See pg 15 for guide)

CAT3636	36"L × 36"W
C2T4832	48"L × 32"W
C2T4834	48"L × 34"W
CAT6036	60"L × 36"W

3.19" THRESHOLD CATALINA® BASES

Compatible with MB28827 Drain (See pg 15 for guide)



CAT4836	48"L × 36"W
CAT3648	36"L × 48"W
CAT4848	48"L × 48"W
CAT6042	60"L × 42"W
CAT6048	60"L × 48"W

6" THRESHOLD CAYMAN® BASES

Compatible with MB28827 Drain (See pg 15 for guide)



CAY3636	36"L × 36"W	CAY4834	48"L × 34"W
CAY3642	36"L × 42"W	CAY4836	48"L × 36"W
CAY4234	42"L × 34"W	CAY4848	48"L × 48"W
CAY4236	42"L × 36"W	CAY6034	60"L × 34"W
CAY4242	42"L × 42"W	CAY6036	60"L × 36"W
CAY4248	42"L × 48"W	CAY6042	60"L × 42"W
CAY4832	48"L × 32"W		

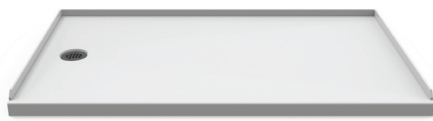


SHOWER BASES
END DRAIN

Shown with MM23959 Solid Surface Drain Cap & MB28827 Drain

2" THRESHOLD CATALINA® BASES

Compatible with MB28827 Drain & MM23959 Drain Cap (See pg 15 for guide)



C2T6030	60"L × 30"W
C2T6032	60"L × 32"W
CAT6034	60"L × 34"W

4" THRESHOLD CAYMAN® BASES

Compatible with MB28827 Drain (See pg 15 for guide)



CAY6030	60"L × 30"W
CAY6032	60"L × 32"W

4.13" THRESHOLD CATALINA® BASES

Compatible with MB28827 Drain & MM17959 Drain Cover (See pg 15 for guide)



CAT6030	60"L × 30"W
CAT6032	60"L × 32"W



**SHOWER BASES
SEATED END DRAIN**

Shown with MB28827 Drain with Chrome Strainer



5.38" THRESHOLD CATALINA® BASES

Compatible with MB28827 Drain (See pg 15 for guide)

CAS6030	60"L × 30"W
CAS6032	60"L × 32"W

Note: Seat height 18.25"







BATHTUB FILLERS

Signature® Oval Freestanding Bath shown with Transitional Round Freestanding Filler in Matte Black





TRANSITIONAL ROUND FILLER
FREESTANDING | NW50

-  Polished chrome
-  Brushed nickel
-  Brushed bronze
-  Matte black






CONTEMPORARY SQUARE FILLER
FREESTANDING | NW55

-  Polished chrome
-  Brushed nickel



WATER RAINBOW® FLOW FILLER
DECK MOUNT | MP33

-  Polished chrome
-  Brushed nickel
-  White with chrome accents

Note: The Water Rainbow® filler components are only compatible with current MP33 model.

		MPC BASE	SIZE	HEIGHT*	FEATURE	EXPERIENCE	DRAIN LOCATION	JETS	BATHING DEPTH	OPERATING GAL	SHIPWT (LBS)	PAGE		
FREESTANDING		ADF6734	67"×34"	24"	Deck Mount Compatible		Center	0	17.6"	80	175	3		
		AMF6734	67"×34"	24"	Deck Mount Compatible		Center	0	17.9"	90	150			
		OSF5930	59"×30"	23.6"	Adjustable Leveling Feet		End	0	15.7"	67	104			
		OSF6732	67"×32"	23.6"	Adjustable Leveling Feet		End	0	15.7"	83	117			
SKIRTED		J1S6030	60"×30"	19"	Tru-Level® Base		LH/RH	0	14"	53	69	4		
								6			84			
		J186030	60"×30"	18"	Above Floor Rough		LH/RH	0	11"	43	78	5		
								6			84			
		J1L6030	60"×30"	17"	ADA Compliant**		LH/RH	0	11"	43	78	6		
								6			84			
		J1S6032	60"×32"	19"	Tru-Level® Base		LH/RH	0	14"	53	70	7		
								6			84			
		J186032	60"×32"	18"	Above Floor Rough		LH/RH	0	11"	43	78	8		
								6			84			
		J1L6032	60"×32"	17"	ADA Compliant**		LH/RH	0	11"	43	78	9		
								6			84			
	J1S6036	60"×36"	19"	Tru-Level® Base		LH/RH	0	14"	62	75	10			
							6			89				
	J4S6042	60"×42"	19"	Tru-Level® Base		LH/RH	0	12.75"	56	84	11			
							6			99				
	J1A7236	72"×36"	19.75"	Tru-Level® Base		LH/RH	0	15"	78	121.5	12			
							6			147				
DROP-IN	OVAL & OVAL IN RECTANGLE		J3D6042	59"×41"	21"	Tru-Level® Base		LH/RH	0	15.5"	66	73	7	
									6			89		
			J4D6042 (J4T6042)	60"×42"	21"	Tru-Level® Base		LH/RH	0	15"	66	77		
									6			93		
			J3D6638	66"×38"	19.5"	Tru-Level® Base		LH/RH	0	15.25"	56	90		
									6			115		
		J3D7242	71"×41"	21"	Tru-Level® Base		LH/RH	0	15"	78	81	8		
								6			97			
		J4D7242 (J4T7242)	72"×42"	21"	Tru-Level® Base		LH/RH	0	15"	78	83			
								6			99			
	RECTANGLE		J2D6036 (J2T6036)	60"×36"	19.25"	Tru-Level® Base		LH/RH	0	13.8"	54		67	9
									6				81	
	J2D7236 (J2T7236)	72"×36"	19.25"	Tru-Level® Base		LH/RH	0	13.8"	58	73				
							6			88				
CORNER		J5D6060 (J5T6060)	60"×60"	22"	Tru-Level® Base		LH/RH	0	15"	86	151			
								6			166			

*Tile flanges add 1.25"

**ADA compliant when installed according to the requirements of the Accessibility Guidelines, Section 607 of the Act

 = Soaking Bath

 = Whirlpool Bath




LH = Left Hand Drain

RH = Right Hand Drain

BATH ACCESSORIES

<p>Universal Rotary/Cable Drain Kit, 26" Cable Available Colors: Chrome, Brushed Nickel, Oil-Rubbed Bronze</p>		<p>HP55</p>
<p>Universal Deep Soak Drain Kit (Compatible with Soaking bathtubs only) Available Colors: Chrome, Brushed Nickel, Oil-Rubbed Bronze</p>		<p>LH33</p>
<p>Slip Cover Drain Kit Available Colors: Chrome, Brushed Nickel, Oil-Rubbed Bronze, White, Polished Nickel</p>		<p>PG35</p>
<p>Jacuzzi® Systems Clean™ (Contains Twelve 5-Packs per case) A two-part plumbing system cleaner made specifically for whirlpool baths. Systems Clean™ minimizes the build-up of residuals, such as soap scum, bath and body oils, and dirt from inside the whirlpool bath's pipes, pumps, fittings and circulation system.</p>		<p>T628000</p>
<p>RapidHeat™ Inline Heater Available as an installed option on all Whirlpool baths.</p>		<p>Order factory installed heater with feature code HX</p>
<p>Drain Alignment Kit Use during freestanding tub rough-in to simplify installation.</p> <ul style="list-style-type: none"> • Includes snap-off test cap • Designed to be installed in an 8"/10" joist space • Can be installed with waterproofing membrane 		<p>MZ20000</p>

SHOWER ACCESSORIES

<p>Shower Drain with Chrome Strainer Compatible with all Jacuzzi® shower bases</p>		<p>MB28827</p>
<p>Solid Surface Drain Cover Clicks securely into Jacuzzi® Strainer Grid Fits: CAT6030 End Drain, CAT6032 End Drain</p>		<p>MM17959</p>
<p>Solid Surface Drain Cap Clicks securely into Jacuzzi® Strainer Grid Fits all 2" Jacuzzi® shower bases</p>		<p>MM23959</p>



www.jacuzziluxurybath.com



@JACUZZIBATHUS

CUSTOMER SERVICE AVAILABLE

6:00 AM - 4:00 PM PST

(800) 288-4002

13925 City Center Drive, Suite 200
Chino Hills, CA 91709 / U.S.A.
(800) 288-4002

©2019 Jacuzzi Brands LLC. All rights reserved. Jacuzzi® is a registered trademark of Jacuzzi Inc., used with permission. All other brands, product names, company names, trade names, trademarks and service marks used are the property of their respective owners. The products identified may be modified and enhanced at any time, and specifications may change without notice. Dimensions are approximate. Products may be configured differently in some locations to meet local electrical requirements. Products are manufactured under one or more United States patent numbers. Other patents may also apply.

NE87000 Rev B 05/19
Printed in the United States